

7. The tropic of cancer passes through how many states of India. (1)
a) 6 b) 7 c) 8 d) 9

8. Assertion (A) : Lakes are of great value to human beings. (1)
Reason (R) : They moderate the climate of the surroundings, maintain the aquatic ecosystem, enhance natural beauty, help develop tourism and provide recreation.

- A. Both (A) and (R) are true, and (R) is the correct explanation of (A)
- B. (A) is true, but (R) is false.
- C. Both (A) and (R) are true, but (R) is not the correct explanation of (A)
- D. (A) is false, but (R) is true.

9. " First Fish" appeared on earth -----years ago? (1)

- a) 3,800 - 4,800 Million
- b) 2,500 - 3,800 Million
- c) 570 - 2,500 Million
- d) 438 - 505 Million

10 . Which one of the following is a direct source of information about the interior of the earth? (1)

- a) Earthquake waves
- b) Volcanoes
- c) Gravitational force
- d) Earth magnetism

11. **Assertion (A) :** The **difference** in the geomorphic features of different areas of the earth's surface are known as **areal differentiation**. (1)

Reason (R) : This **definition of geography** is based on **interrelation, differential character** and **areal expression** of different phenomena.

- a) Both (A) and (R) are true and (R) is the correct explanation of (A)
- b) Both (A) and (R) are true but (R) is not a correct explanation of (A)
- c) (A) is true but (R) is false
- d) (A) is false but (R) is true

12. Moho discontinuity is ---- (1)

- a) the boundary between crust and Mantle c) the Boundary between the Inner core and Outer Core
- b) the boundary between Mantle and Core d) Boundary between the upper and lower mantle

13. **Assertion (A):** **Main mineral constituents of the continental mass is Silica.** (1)

Reason (R) : **Si stands for Silica and Ma stands for magnesium**

- a.) Both A and R are correct but does not explains each other c.) Only R is correct
- b.) A and R clearly explains each other d.) Both are incorrect

14. **Assertion(A):** **Asia is the largest continent.** (1)

Reason(R): **It covers about 1/4th of the total land area of the Earth.**

- (a) Both A and R are true and R is the correct explanation of A.
- (b) Both A and R are true but R is not the correct explanation of A.
- (c) A is true but R is false.
- (d) A is false but R is true

15. Sometimes Core is also referred to as? (1)

- a) SiAl layer
- b) SiMa layer
- c) SiAl and SiMa layer
- d) Nife layer

16 What is the Southernmost latitude of India? (1)

- a) 6°45' N
- b) 8°4' N
- c) 37°6' N
- d) 37°9' N

17. **Assertion (A): Extrusive Igneous rocks have a very fine grained structure.** (1)

Reason (R) : Deccan Plateau is made up of Extrusive Igneous rock.

- a.) Only R is correct
- b.) R explain A clearly
- c.) A is incorrect
- d.) Both are incorrect

SECTION B

Question 18 & 19 are source-based questions.

(Each Question carries 3 Marks)

18. Study the diagram carefully and answer the following questions. (1+1+1=3)

18.1. What is the correct order of arrival of seismic waves?

- A. L-S-P
- B. P-S-L
- C. S-P-L
- D. L-P-S

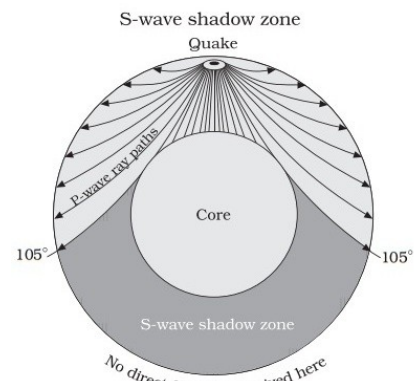
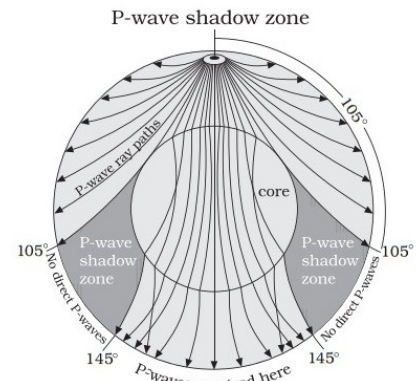
18.2 'S' waves cannot travel in.....

- A. Core
- B. Crust and core
- C. Mantle and crust
- D. Core and Mantle

18.3. Assertion: A seismic shadow zone is not in a constant place; each earthquake epicenter has a different shadow zone.

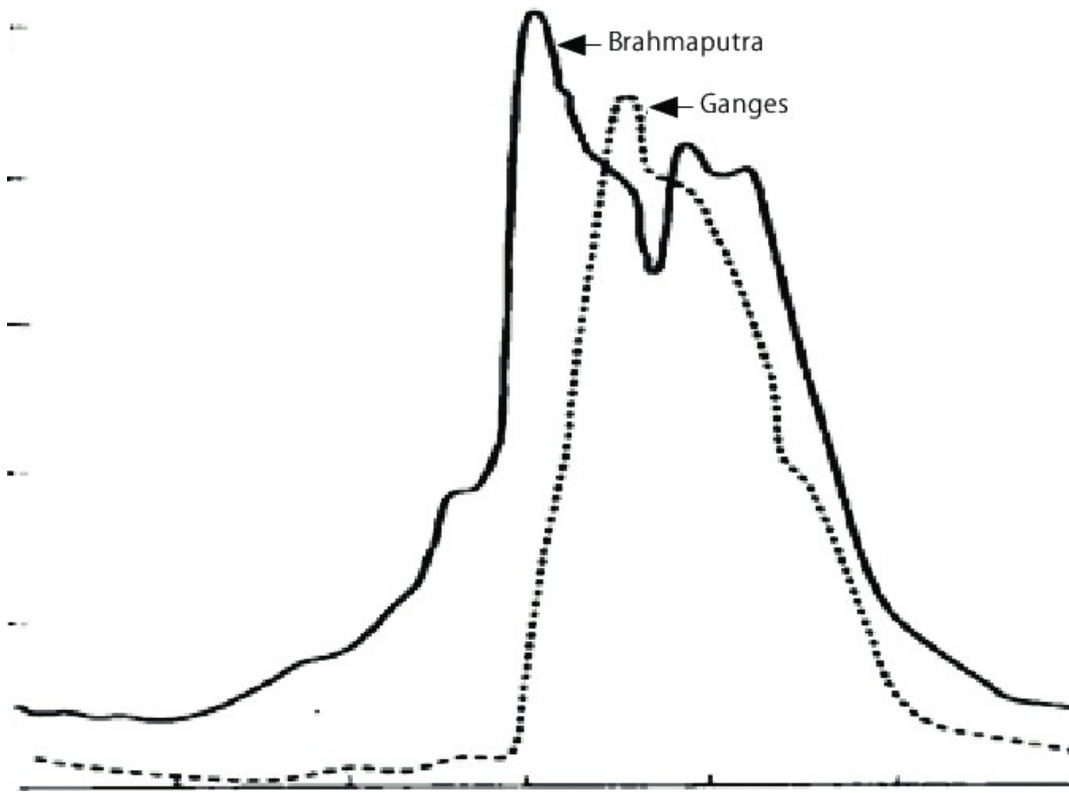
Reason: seismic shadow zone changes with change in epicenter.

- a.) Only R is correct
- b.) R explain A clearly
- c.) A is incorrect
- d.) Both are incorrect



19. Complete the river regime as directed below.

(1+1+1=3)



19.1. Cusec water

19.2. Month having maximum water volume in Ganga.

19.3. Month having lowest water volume in Brahmaputra.

SECTION C

Question numbers 20 -23 are short answer type questions carrying 3 marks each.

20. Define the three types of weathering. (3)

OR

Define exogenic forces.

21. Draw and define any three type of drainage pattern. (3)

22. How Standard Meridian of any country is decided? (3)

23. Define the process of soil formation. (3)

SECTION: D

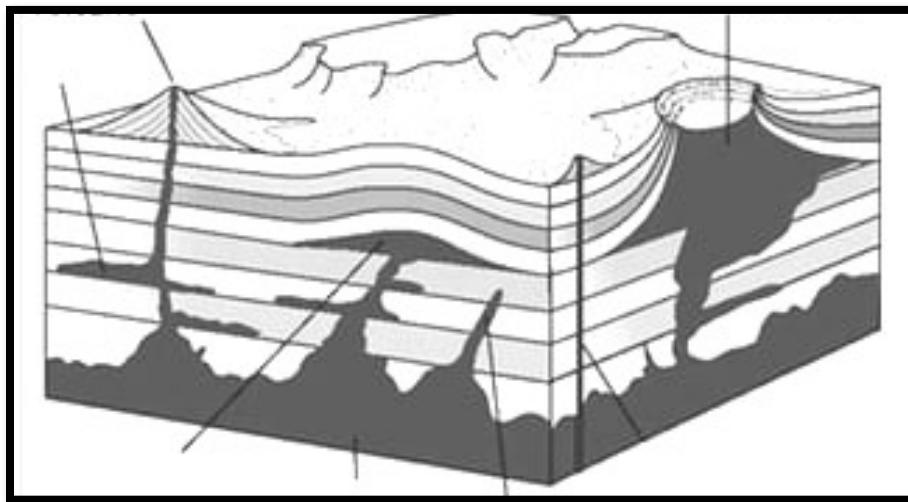
Question numbers 24 to 28 are long answer-based questions.(Each Question carries 5 marks)

24. "The major areas of the Himalaya have been formed by folding while the minor physical features in them have been the result of weathering and other agents of change." Explain the statement with the help of suitable example. (5)

25. Why landslides are very often in Shivalik ranges? (5)

26. Describe Why Himalaya is known as Geoenvironmental divide? (5)

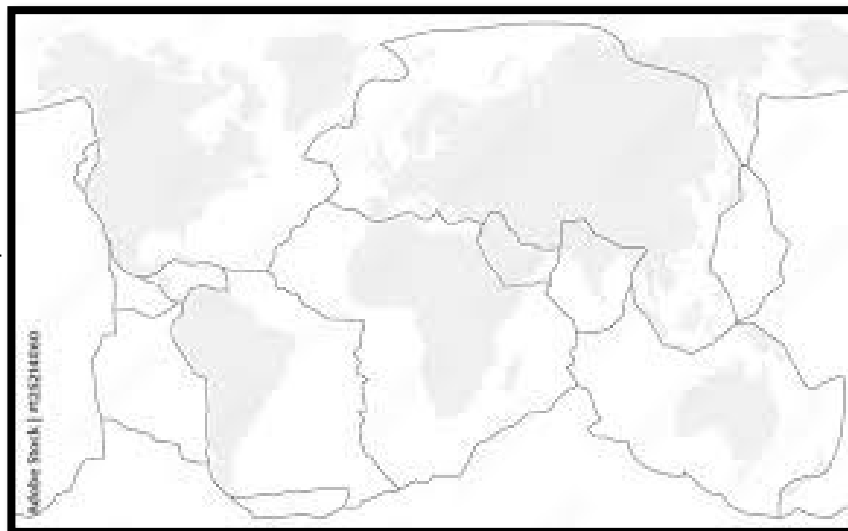
27. Identify any five intrusive structure and label the diagram given below. Define the identified structures in short. (5)



28. Identify five plates boundary

(5)

and label any with their type.



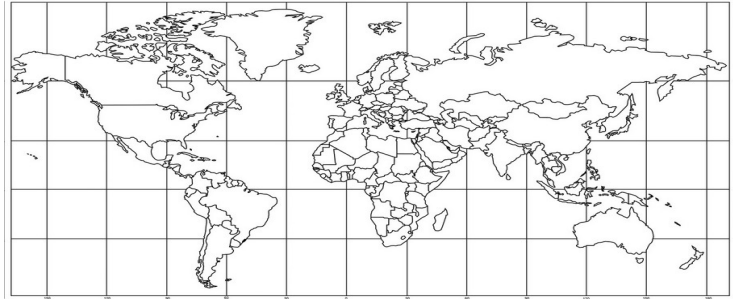
Section E

Question numbers 29 & 30 are map based questions having 5 sub-parts each.

29 On the given map of the world, locate and label the following.

(5)

1. Vesuvius volcano
2. Kilimanjaro
3. Stromboli
4. Mid- Atlantic ridge
5. Circum pacific land



30. Locate and label the following on the given political map of India with appropriate symbols (5)

- (A) River Beas
- (B) Zozila pass
- (C) Chhota nagpur plateau
- (D) Coromandal coast.
- (E) Namcha Barwa

